



**COUNCIL OF
THE EUROPEAN UNION**

Brussels, 15 November 2011

**16923/11
ADD 1**

**SOC 995
MI 566
ECOFIN 769
EDUC 272
ETS 20**

COVER NOTE

from: Secretary-General of the European Commission,
signed by Mr Jordi AYET PUIGARNAU, Director

date of receipt: 11 November 2011

to: Mr Uwe CORSEPIUS, Secretary-General of the Council of the European
Union

No Cion doc.: SEC(2011) 1343 final

Subject: Commission Staff Working Paper

- Accompanying the document "Report from the Commission to the Council on the Functioning of the Transitional Arrangements on Free Movement of Workers from Bulgaria and Romania"

Delegations will find attached Commission document SEC(2011) 1343 final.

Encl.: SEC(2011) 1343 final



EUROPEAN COMMISSION

Brussels, 11.11.2011
SEC(2011) 1343 final

COMMISSION STAFF WORKING PAPER

Accompanying the document

**REPORT FROM THE COMMISSION TO THE COUNCIL __on the Functioning of
the Transitional Arrangements on Free Movement of Workers from Bulgaria and
Romania**

{COM(2011) 729 final}

EN

1. Statistical annex

Table A1: Share of foreign nationals resident in the EU-27 by broad group of citizenship, 2003-10 (% of total population)

Host country	Resident foreign nationals from...																																	
	EU-15 Member States								EU-10 Member States								EU-2 Member States								Non-EU-27 countries									
	2003	2004	2005	2006	2007	2008	2009	2010	2003	2004	2005	2006	2007	2008	2009	2010	2003	2004	2005	2006	2007	2008	2009	2010	2003	2004	2005	2006	2007	2008	2009	2010		
	% of total resident population																																	
BE 2)	4.8	5.2	5.2	4.9	5.0	5.2	5.2	5.1	0.1	0.1	0.2	0.2	0.2	0.4	0.4	0.5	0.0	0.1	0.1	0.2	0.2	0.2	0.3	0.4	2.1	2.5	2.4	2.4	2.8	2.9	2.8	2.6		
DK 1)	1.0	1.1	1.1	1.1	1.2	1.3	1.3	1.5	0.2	0.2	0.2	0.3	0.4	0.5	0.6	0.5	0.0	0.0	0.0	0.0	0.1	0.1	0.1	0.3	3.8	3.7	3.6	3.6	3.7	3.8	3.9	4.3		
DE 1)	2.2	2.0	2.0	2.2	2.2	2.1	2.1	2.1	0.6	0.5	0.6	0.7	0.7	0.7	0.8	0.7	0.2	0.1	0.1	0.1	0.2	0.2	0.2	0.3	5.9	6.2	6.1	5.8	5.8	5.7	5.6	5.6		
IE 3)	3.3	3.2	3.6	3.6	3.6	3.8	3.3	2.7	0.8	1.2	2.4	3.7	4.8	4.7	4.1	4.0	-	-	-	0.3	0.4	0.4	0.4	0.3	2.7	2.9	2.8	3.1	3.3	3.4	3.1	2.8		
EL 2)	0.2	0.2	0.3	0.3	0.2	0.3	0.2	0.3	0.2	0.3	0.3	0.3	0.3	0.3	0.3	0.2	0.3	0.4	0.4	0.5	0.5	0.6	0.8	0.7	3.7	4.1	4.2	4.3	4.9	5.5	6.4	6.2		
ES 1)	1.3	1.5	1.7	2.2	2.4	2.6	2.6	2.9	0.1	0.1	0.2	0.2	0.3	0.3	0.3	0.3	0.6	0.9	1.1	1.5	2.0	2.1	2.2	2.2	4.6	5.3	6.1	6.4	7.0	7.4	7.3	6.9		
FR 2)	1.8	1.8	1.6	1.8	1.9	1.8	1.8	1.9	0.1	0.1	0.1	0.1	0.1	0.1	0.1	0.1	0.0	0.0	0.0	0.1	0.1	0.1	0.1	0.1	2.8	2.9	2.9	2.8	3.2	3.1	3.3	3.4		
IT 1)	0.2	0.2	0.2	0.3	0.3	0.3	0.3	0.3	0.1	0.1	0.1	0.2	0.2	0.2	0.2	0.3	0.3	0.5	0.5	0.6	1.1	1.4	1.5	1.8	2.8	3.3	3.6	3.9	4.2	4.6	5.0	5.6		
LU 2)	34.7	34.7	36.2	35.6	37.3	37.5	38.3	37.9	0.3	0.2	0.2	0.6	0.8	0.6	1.0	0.8	-	0.2	-	-	-	0.2	-	0.6	3.4	3.8	3.0	3.3	3.4	3.6	4.2	3.6		
NL 1)	1.3	1.3	1.3	1.3	1.3	1.4	1.4	1.1	0.1	0.1	0.1	0.2	0.2	0.3	0.4	0.5	0.0	0.0	0.0	0.0	0.1	0.1	0.1	0.1	2.3	2.3	2.2	2.2	2.1	2.1	2.1	2.1		
AT 1)	1.5	1.6	1.7	1.9	2.0	2.2	2.2	2.3	0.7	0.8	0.9	1.0	1.0	1.1	1.2	1.3	0.3	0.3	0.3	0.3	0.4	0.5	0.5	0.5	6.7	6.7	6.7	6.5	6.6	6.6	6.5	6.6		
PT 2)	0.4	0.4	0.4	0.4	0.4	0.4	0.3	0.3	-	-	-	-	-	-	-	-	0.1	0.1	0.1	0.1	0.3	0.1	0.2	0.2	1.8	2.0	2.3	2.2	2.7	2.7	2.9	2.8		
FI 1)	0.4	0.4	0.4	0.4	0.4	0.4	0.4	0.4	0.3	0.3	0.3	0.4	0.5	0.5	0.6	0.7	0.0	0.0	0.0	0.0	0.0	0.0	0.0	0.0	1.4	1.4	1.4	1.5	1.6	1.7	1.8	1.9		
SE 1)	2.1	2.1	2.1	2.1	2.1	2.1	2.1	2.0	0.2	0.3	0.3	0.4	0.5	0.5	0.6	0.6	0.0	0.0	0.0	0.0	0.1	0.1	0.1	0.2	3.0	3.0	2.9	2.9	3.1	3.2	3.5	4.1		
UK 2)	1.6	1.6	1.7	1.6	1.6	1.7	1.7	1.7	0.2	0.3	0.5	0.8	1.2	1.2	1.2	1.5	0.0	0.0	0.0	0.1	0.1	0.1	0.1	0.2	3.0	3.2	3.4	3.7	3.9	4.2	4.0	3.7		
EU-15 4)	1.5	1.5	1.6	1.7	1.7	1.7	1.7	1.8	0.2	0.3	0.3	0.4	0.5	0.6	0.6	0.6	0.2	0.2	0.3	0.3	0.5	0.6	0.6	0.7	3.7	4.0	4.1	4.2	4.4	4.5	4.6	4.7		
CZ 1)	0.1	0.1	0.2	0.2	0.3	0.4	0.3	0.3	0.5	0.5	0.7	0.8	0.9	0.9	0.9	0.8	0.1	0.1	0.1	0.1	0.1	0.1	0.1	0.1	1.2	1.2	1.6	1.8	2.1	2.5	2.7	2.6		
EE 2)	-	-	-	-	-	-	-	-	-	-	-	-	-	-	-	-	-	-	-	-	-	-	-	-	18.3	18.1	16.2	15.6	16.1	16.3	16.0	15.0		
CY 2)	:	5.8	5.6	5.9	5.4	6.4	5.8	6.3	:	0.1	0.2	0.4	0.3	0.5	0.5	0.7	:	0.5	0.7	0.7	1.6	2.0	3.2	4.1	:	4.8	4.7	4.8	5.7	6.2	6.0	6.5		
LV 1)	0.1	0.1	0.1	0.1	0.1	0.1	0.2	0.1	0.1	0.1	0.2	0.2	0.2	0.2	0.2	0.2	0.0	0.0	0.0	0.0	0.0	0.0	0.0	0.0	22.0	20.9	19.7	18.7	17.9	17.5	17.0	16.0		
LT 1)	:	0.0	0.0	0.0	0.0	0.0	0.0	:	:	0.0	0.0	0.0	0.0	0.0	0.0	0.0	:	0.0	0.0	0.0	0.0	0.0	0.0	0.0	0.0	0.9	0.9	1.1	1.2	1.2	1.0	0.8		
HU 1)	0.1	0.1	0.2	0.3	0.3	0.3	0.3	0.4	0.1	0.0	0.1	0.1	0.1	0.1	0.1	0.2	0.6	0.7	0.7	0.7	0.7	0.7	0.8	0.8	0.6	0.6	0.6	0.7	0.8	0.8	0.8	1.2		
MT 2)	1.5	1.3	0.9	0.9	1.1	1.1	1.2	1.4	-	-	-	-	-	-	-	-	-	-	-	-	-	-	-	-	0.8	1.3	1.5	1.4	0.9	1.2	1.9	1.6		
PL 2)	:	0.0	0.0	0.0	0.0	0.0	0.0	0.0	:	-	-	-	-	-	0.0	-	:	-	-	-	-	-	-	-	:	0.0	0.1	0.1	0.1	0.1	0.1	0.1	0.1	
SI 1)	0.1	0.1	0.1	0.1	0.1	0.1	0.1	0.3	0.0	0.0	0.0	0.0	0.0	0.0	0.0	0.1	0.0	0.0	0.0	0.0	0.0	0.0	0.0	:	2.2	2.1	2.3	2.5	3.2	3.3	3.8	5.0		
SK 1)	0.1	0.1	0.1	0.1	0.2	0.2	0.2	0.3	0.2	0.1	0.2	0.2	0.2	0.3	0.3	0.4	0.1	0.0	0.0	0.0	0.1	0.1	0.1	0.1	0.3	0.2	0.2	0.2	0.3	0.4	0.4	0.6		
EU-10 4)	0.0	0.1	0.1	0.2	0.2	0.2	0.2	0.2	0.1	0.1	0.1	0.1	0.2	0.2	0.2	0.2	0.1	0.1	0.1	0.1	0.1	0.1	0.2	0.2	1.3	1.4	1.4	1.5	1.5	1.6	1.6	1.6		
BG 2)	-	-	-	-	-	-	-	-	-	-	-	-	-	-	-	-	-	-	-	-	-	-	-	-	0.1	0.1	0.1	0.1	0.1	0.1	0.1	0.2	0.1	
RO 2)	:	-	-	-	-	-	-	-	:	-	-	-	-	-	-	-	:	-	-	-	-	-	-	-	:	0.0	0.1	0.1	0.1	0.0	-	-	-	
EU-2 4)	:	:	:	:	:	:	:	:	:	:	:	:	:	:	:	:	:	:	:	:	:	:	:	:	:	:	0.1	0.1	0.1	0.1	0.1	0.1	:	:
EU-27 4)	1.2	1.2	1.3	1.3	1.4	1.4	1.4	1.4	0.2	0.2	0.3	0.4	0.4	0.5	0.5	0.5	0.2	0.2	0.2	0.3	0.4	0.5	0.5	0.6	3.1	3.4	3.5	3.5	3.7	3.8	3.9	3.9		

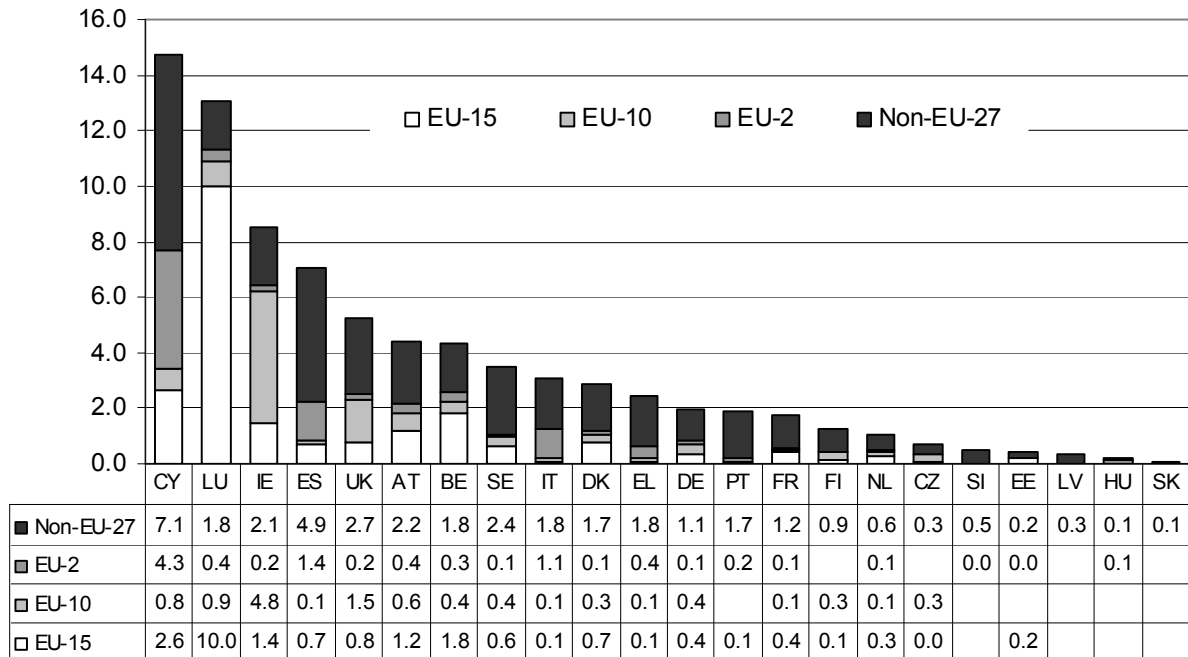
Sources: Eurostat population statistics, Eurostat EU LFS and DG Employment estimates. “:” figures not available. “-” figures too small to be reliable. Note: Choice of data sources according to data availability for individual countries. — For population statistics: end of year data (1st January of subsequent year), for LFS: 4th quarter data. — Figures not fully comparable between Member States due to the use of different sources. — Data from the LFS should be treated with some caution due to limitations of the survey with regard to foreign populations, in particular concerning coverage of very recent migrants and collective households, relative levels of non-response and small sample sizes. 1) Eurostat population statistics. -2) EU LFS quarterly data, 4th quarter. -3) EU LFS quarterly data (4th quarter) except for 2003-2005: LFS estimates obtained from CSO. For 1), 2) and 3): values for 2010 are estimates of DG Employment based on EU-LFS. 4) EU totals and sub-totals are only of an indicative nature as they are the sum of country values that stem from different sources; EU totals and sub-totals include country data which are not shown individually due to small sample size.

Table A2: Number of foreign nationals resident in the EU-27 by broad group of citizenship, 2003-10 (in 1,000)

Host country	Resident foreign nationals from...																															
	EU-15 Member States								EU-10 Member States								EU-2 Member States								Non-EU-27 countries							
	2003	2004	2005	2006	2007	2008	2009	2010	2003	2004	2005	2006	2007	2008	2009	2010	2003	2004	2005	2006	2007	2008	2009	2010	2003	2004	2005	2006	2007	2008	2009	2010
	1,000 persons																															
BE 2)	494	539	545	523	533	562	567	562	13	15	17	19	23	40	49	55	4	6	10	16	19	19	27	41	220	260	250	254	303	308	306	289
DK 1)	56	57	59	63	68	73	75	85	10	11	13	16	22	30	33	30	2	2	2	2	3	5	7	14	203	198	196	197	205	211	214	239
DE 1)	1,850	1,660	1,654	1,783	1,779	1,761	1,746	1,742	482	440	483	564	596	605	616	605	133	113	112	120	141	158	178	206	4,861	5,076	5,032	4,789	4,740	4,655	4,585	4,540
IE 3)	129	130	148	153	159	169	149	123	33	47	100	161	211	211	183	180	-	-	-	13	18	18	19	14	109	117	117	132	146	151	137	124
EL 2)	19	24	27	28	26	27	27	29	25	32	29	29	34	37	27	23	32	41	47	48	56	70	88	82	396	436	450	461	522	597	695	673
ES 1)	538	644	765	982	1,096	1,173	1,197	1,361	43	56	71	103	127	137	140	137	254	371	490	664	890	964	991	1,006	1,937	2,301	2,676	2,857	3,149	3,377	3,336	3,205
FR 2)	1,034	1,076	960	1,062	1,128	1,102	1,122	1,147	40	45	39	42	42	41	46	77	21	14	14	30	38	61	39	87	1,673	1,702	1,747	1,711	1,912	1,867	1,997	2,108
IT 1)	134	138	143	149	158	165	169	183	56	69	81	95	118	130	138	153	189	264	315	362	659	837	934	1,069	1,611	1,931	2,132	2,333	2,498	2,760	2,994	3,366
LU 2)	154	155	163	163	173	175	185	186	1	1	1	3	4	3	5	4	-	1	-	-	-	1	-	3	15	17	14	15	16	17	20	18
NL 1)	211	210	210	211	215	226	233	185	13	18	23	29	37	48	59	81	4	5	5	5	11	16	19	20	371	369	361	353	344	347	341	358
AT 1)	122	132	143	154	167	181	187	197	60	68	75	81	87	94	97	105	26	28	28	28	35	41	45	46	546	547	549	542	545	547	548	557
PT 2)	38	45	37	40	41	43	37	31	-	-	-	-	-	-	-	-	10	8	13	14	27	15	25	20	185	213	241	236	283	288	308	296
FI 1)	19	19	20	21	22	23	23	22	16	17	18	21	24	28	31	39	1	1	1	1	1	2	2	1	72	72	75	79	86	90	99	101
SE 1)	186	186	186	188	192	196	197	187	21	23	27	34	43	51	58	61	3	3	3	3	6	9	11	17	266	269	264	267	284	292	325	385
UK 2)	951	929	1,002	962	957	1,007	1,044	1,016	115	171	293	503	691	728	720	945	13	21	29	35	40	74	90	124	1,744	1,914	2,014	2,191	2,358	2,521	2,458	2,262
EU-15 4)	5,936	5,943	6,061	6,481	6,714	6,881	6,958	7,056	929	1,012	1,272	1,701	2,061	2,185	2,203	2,498	693	877	1,070	1,344	1,945	2,290	2,476	2,749	14,208	15,422	16,117	16,414	17,391	18,028	18,361	18,521
CZ 1)	13	15	19	24	33	37	32	31	50	51	68	78	90	99	94	81	6	6	7	7	8	10	10	6	126	122	164	186	216	262	287	269
EE 2)	-	-	-	-	-	-	-	-	-	-	-	-	-	-	-	-	-	-	-	-	-	-	-	-	246	244	217	209	216	218	214	201
CY 2)	:	42	41	44	41	49	45	48	:	1	2	3	2	4	4	6	:	4	5	5	13	15	25	31	:	35	35	35	43	47	46	50
LV 1)	1	1	2	2	3	3	3	2	3	3	4	4	5	5	5	4	0	0	0	0	0	1	1	1	511	482	451	427	408	395	382	357
LT 1)	:	1	1	1	1	1	1	:	:	1	1	1	1	1	1	1	:	0	0	0	0	0	0	0	:	31	31	37	40	39	35	28
HU 1)	12	10	18	25	25	31	34	42	5	4	7	8	8	12	11	19	57	69	67	68	67	68	74	80	56	62	64	67	76	77	81	115
MT 2)	6	5	4	4	4	5	5	6	-	-	-	-	-	-	-	-	-	-	-	-	-	-	-	-	3	5	6	6	4	5	8	7
PL 2)	:	10	17	12	10	7	10	11	:	-	-	-	-	-	6	-	:	-	-	-	-	-	-	-	:	16	20	49	37	24	21	31
SI 1)	1	1	2	2	2	3	3	5	0	0	1	1	1	1	1	2	0	0	0	0	1	1	1	:	43	43	46	51	65	66	78	103
SK 1)	3	3	5	7	9	11	13	15	9	8	9	11	13	15	19	23	3	1	1	1	4	6	7	7	15	10	11	13	15	20	24	35
EU-10 4)	37	88	109	121	130	146	145	160	68	68	93	109	122	141	141	138	66	81	81	82	93	101	118	125	1,000	1,050	1,046	1,080	1,119	1,152	1,176	1,195
BG 2)	-	-	-	-	-	-	-	-	-	-	-	-	-	-	-	-	-	-	-	-	-	-	-	-	10	9	10	8	9	10	13	6
RO 2)	-	-	-	-	-	-	-	-	-	-	-	-	-	-	-	-	-	-	-	-	-	-	-	-	:	10	15	24	25	11	-	-
EU-2 4)	:	:	:	:	:	:	:	:	:	:	:	:	:	:	:	:	:	:	:	:	:	:	:	:	19	25	32	34	21	:	:	:
EU-27 4)	5,973	6,030	6,170	6,602	6,843	7,027	7,103	7,217	997	1,081	1,365	1,810	2,183	2,326	2,344	2,636	759	958	1,150	1,426	2,039	2,392	2,594	2,874	15,218	16,491	17,187	17,526	18,544	19,200	19,554	19,718

Sources: Eurostat population statistics, Eurostat EU LFS and DG Employment estimates. “:” figures not available. “-” figures too small to be reliable. Note: Choice of data sources according to data availability for individual countries. — For population statistics: end of year data (1st January of subsequent year), for LFS: 4th quarter data. — Figures not fully comparable between Member States due to the use of different sources. — Data from the LFS should be treated with some caution due to limitations of the survey with regard to foreign populations, in particular concerning coverage of very recent migrants and collective households, relative levels of non-response and small sample sizes. 1) Eurostat population statistics. –2) EU LFS quarterly data, 4th quarter. –3) EU LFS quarterly data (4th quarter) except for 2003-2005: LFS estimates obtained from CSO. For 1), 2) and 3): values for 2010 are estimates of DG Employment based on EU-LFS. 4) EU totals and sub-totals are only of an indicative nature as they are the sum of country values that stem from different sources; EU totals and sub-totals include country data which are not shown individually due to small sample size.

Chart A1: Working age foreign nationals resident for 7 years or less in Member States, 2010 (in % of total resident working-age population)



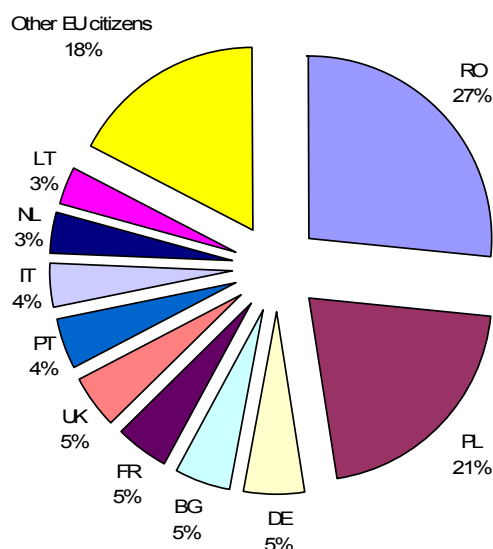
Source: Eurostat, EU LFS, annual data 2010. Note: Numbers for missing data and countries too small to be reliable. Limited reliability for EU-15 results for EL and EE; EU-2 results for LU; and non-EU-27 results for EE and SK.

Table A3: Distribution of recent intra-EU movers (aged 15-64) from Bulgaria and Romania by main receiving countries, 2010

Citizens from :	Bulgaria		Romania	
	Destination countries	Share	Destination countries	Share
	ES	32.2	IT	40.6
	UK	14.5	ES	37.3
	DE	13.4	UK	5.7
	IT	11.5	DE	3.6
	EL	10.2	FR	3.1
	Other EU-25	18.3	Other EU-25	9.7

Source: Eurostat, EU LFS, annual data 2010. Note: recent intra-EU movers defined as working age EU nationals resident seven years or less in another EU Member State.

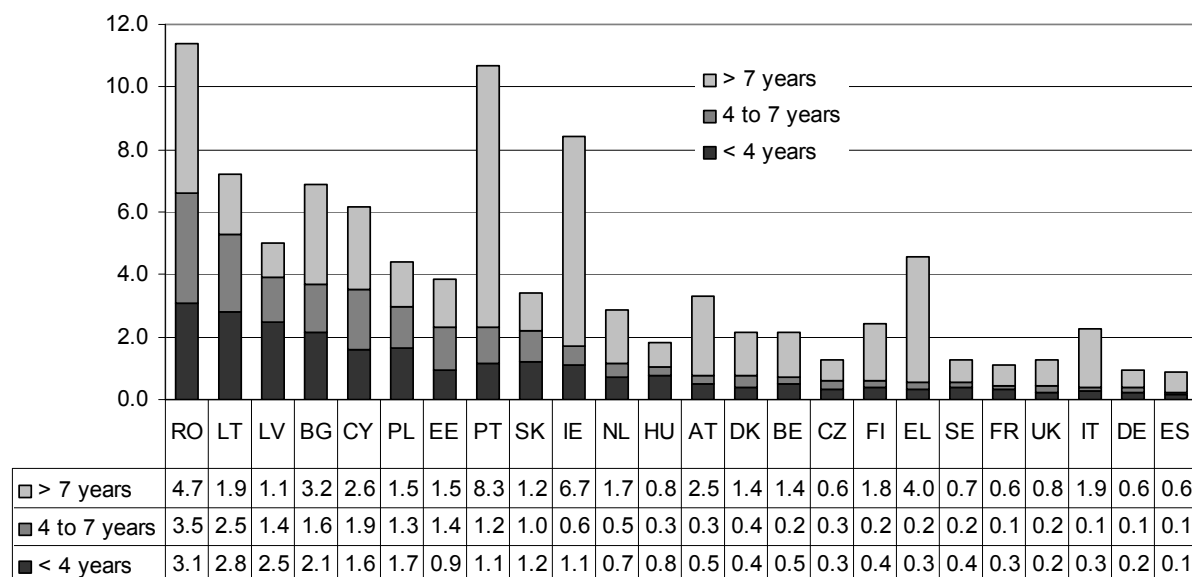
Chart A2: Nationality of recent intra-EU movers (age group 15-64), 2010 (% of all recent intra-EU movers)



Source : Eurostat, EU Labour force survey, annual data 2010

Note: recent intra-EU movers defined as EU nationals resident seven years or less in another EU Member State.

Chart A3: Mobility rates by sending country – mobile EU citizens living in another EU Member State by years of residence (age group 16-64), 2010 (in % of working age population of country of citizenship)



Source: Eurostat, EU Labour force survey, annual data 2010. Note: figures do not include citizens who were born in another Member State and continue living there. Figures for LU, MT and SI too small to be reliable.

Table A4: Annual net growth of stock of foreigners in the EU-15 countries, by group of citizenship (in thousand)

Citizens from :	2004	2005	2006	2007	2008	2009	2010
EU-15	7	118	420	233	167	77	99
EU-10	84	260	429	360	124	18	295
EU-2	183	193	274	601	345	186	273
Non-EU-27 countries	1214	695	297	977	636	333	160

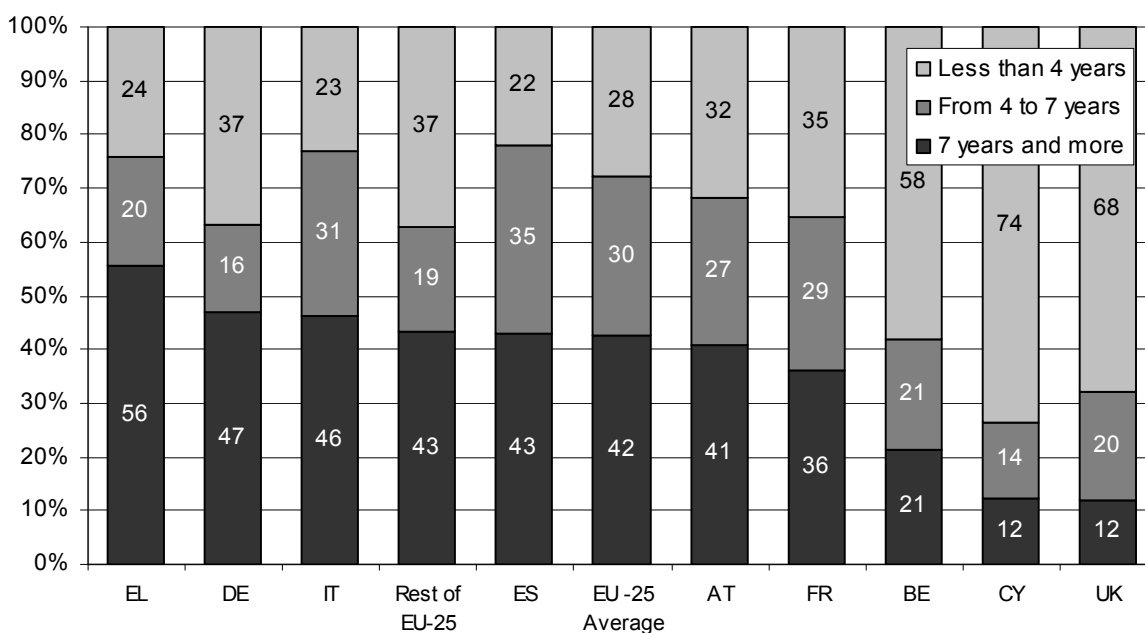
Source: Eurostat population statistics and EU LFS. For more details on the source, please see Tables A1 and A2.

Table A5: Average annual net growth of EU-2 nationals, by group of countries (in thousand and in % of the total resident population)

Group of receiving Member States	2003-2006		2007-2008		2009-2010		
	in thousand	in % of total pop.	in thousand	in % of total pop.	in thousand	in % of total pop.	
Member States granting free access from 2007	2	0.00	13	0.02	10	0.01	
Member States granting free access from 2009	Spain	137	0.32	150	0.33	21	0.05
	Others	10	0.03	13	0.04	19	0.05
Member States not applying free movement	Italy	58	0.10	238	0.40	116	0.19
	Others	15	0.01	70	0.03	76	0.03
Total EU-25	222	0.05	484	0.10	242	0.05	

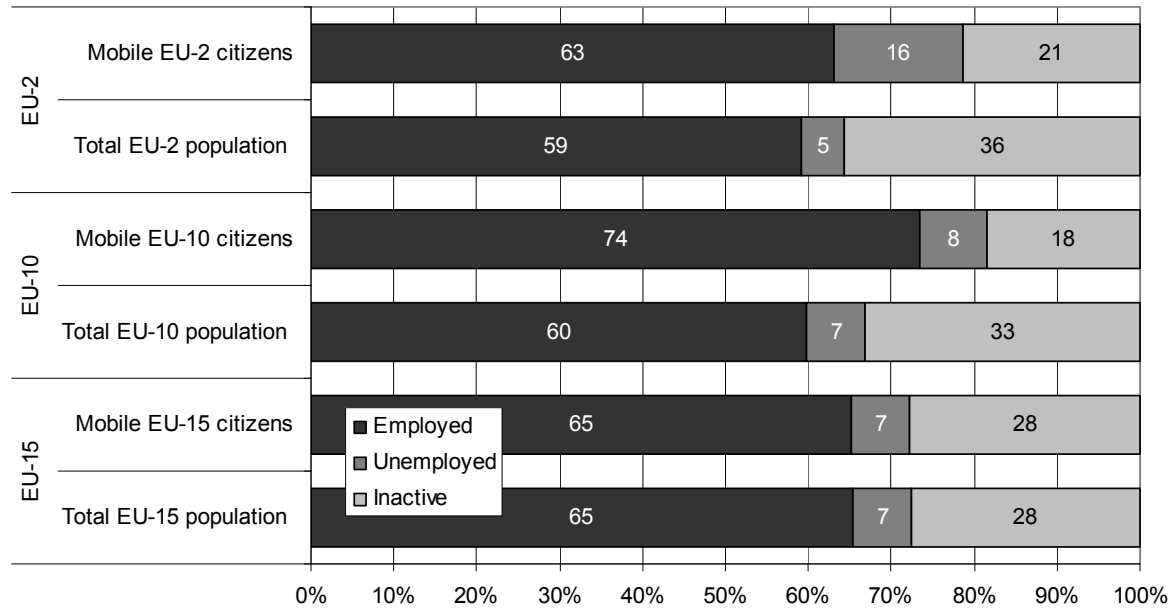
Source: DG EMPL estimates based on Eurostat Population statistics and EU-LFS (for more detailed see notes of tables A1 and A2). Note: Total resident population considered for the ratio is calculated as an average on each period. 2003-2006 corresponds to the period before accession of EU-2 countries; 2007-2008 corresponds to the first phase of the transitional arrangements; 2009-2010 corresponds to the first two years of the second phase of the transitional arrangements. Groups of countries based on table 1 of the main report as follows: 1) Member States granting free access from 2007: CZ, EE, CY, LV, LT, PL, SI, SK, FI and SE; 2) Member States granting free access from 2009: DK, EL, ES, HU, PT; 3) Member States not applying free movement: BE, DE, IE, FR, IT, LU, MT, NL, AT, UK. ES and IT treated separately due to their size in EU-2 inflows.

Chart A4: Distribution of working-age (15-64) EU-2 citizens living in EU-25, by duration of residence in main receiving countries, 2010



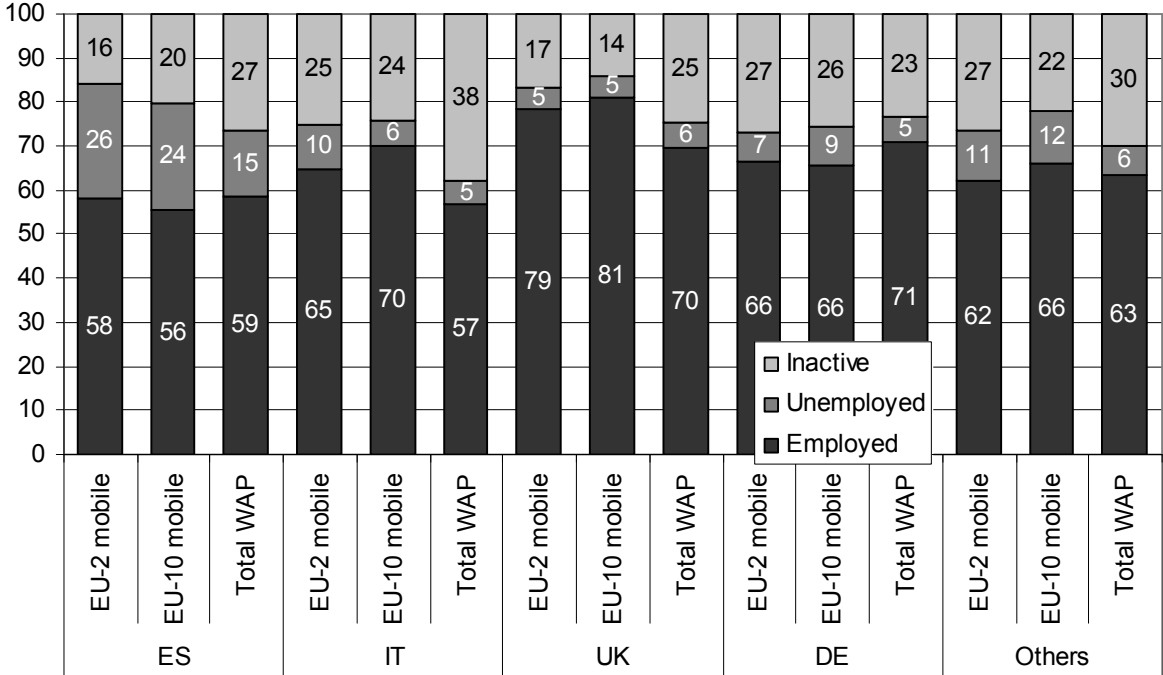
Source: Eurostat, EU Labour force survey, annual data 2010.

Chart A5: Labour market status of recent intra EU movers and total population (aged 15-64), 2010



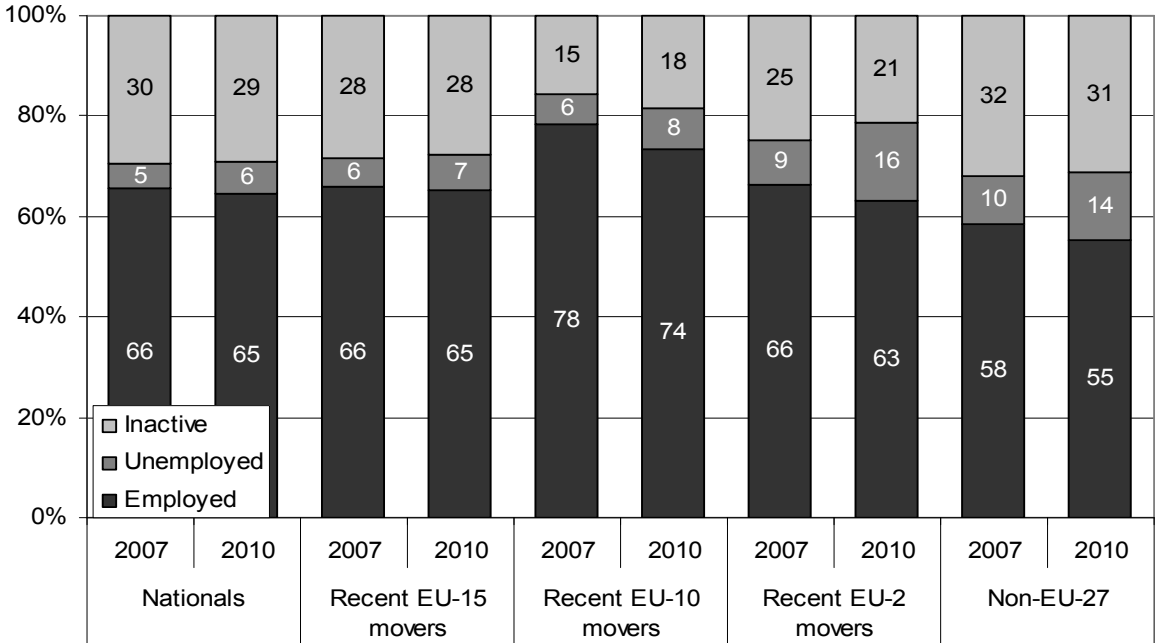
Source: Eurostat, EU LFS (annual averages). Note: Mobile EU citizens are defined as working-age foreign nationals resident for seven years or less in another Member State

Chart A6: Labour market status of recent EU-2 and EU-10 movers compared to total working-age population in the main destination countries, 2010



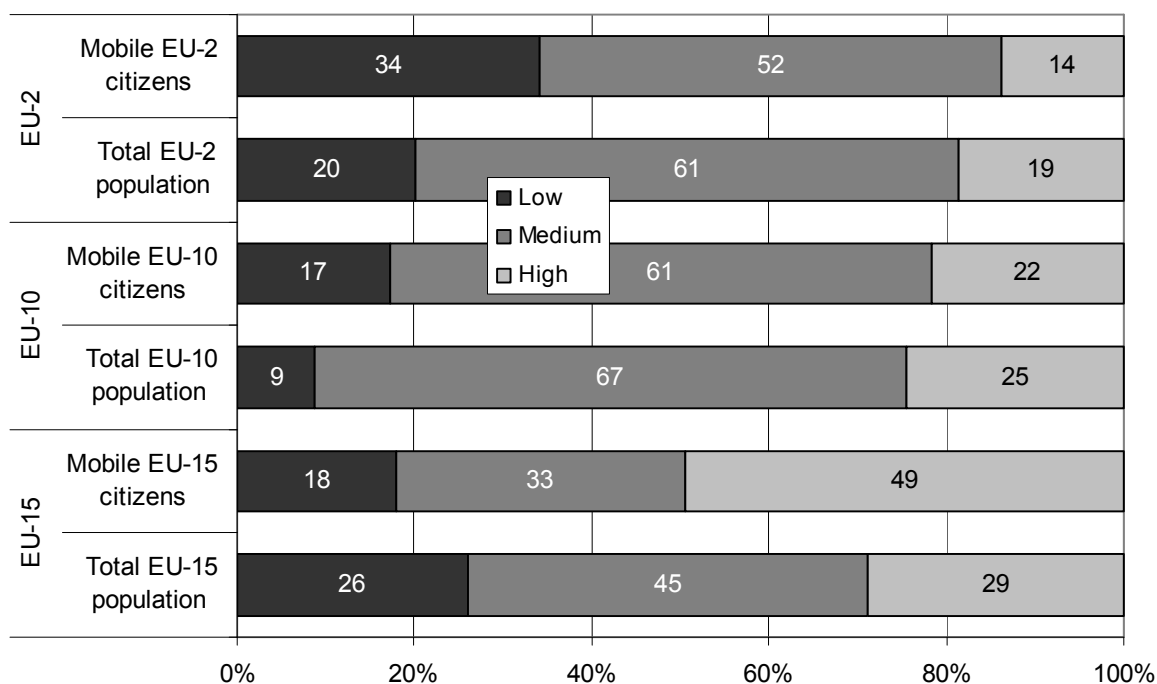
Source: Eurostat, EU Labour Force Survey (annual averages). 'WAP' refers to working-age population.

Chart A7: Labour market status of recent intra-EU movers, compared to nationals and non-EU citizens (aged 15-64) in 2007 and 2010



Source: Eurostat, EU Labour force survey (annual data). Note: Recent intra-EU movers are defined: 1) in 2010 as working-age foreign nationals resident for seven years or less in another Member State 2) in 2007 as working-age foreign nationals resident for four years or less in another Member State. All non-EU citizens are included (no criteria of duration of residence have been applied).

Chart A8: Educational attainment of mobile and total active population, 2010



Source: Eurostat, EU LFS (annual averages). Note: Mobile EU citizens are defined as economically active working-age foreign nationals resident for seven years or less in another Member State.

Table A6: Employment of total resident populations and recently arrived mobile citizens by economic activity, 2010 (% of total employment by group)

Economic activity (Nace Rev. 2)		Total EU-15 workforce	Recent EU-10 movers	Recent EU-2 movers
A	Agriculture, forestry and fishing	2.9	3.2	6.9
B	Mining and quarrying	0.2	:	:
C	Manufacturing	14.9	22.1	11.2
D	Electricity, gas,...	0.7	:	:
E	Water supply; sewerage, waste management...	0.7	:	:
F	Construction	7.6	10.4	21.2
G	Wholesale and retail trade; repair of motor vehicles and motorcycles	14.1	15.0	7.2
H	Transportation and storage	4.9	6.2	3.6
I	Accommodation and food service activities	4.8	13.4	14.2
J	Information and communication	3.1	1.7	:
K	Financial and insurance activities	3.3	(1.1)	:
L	Real estate activities	0.8	:	:
M	Professional, scientific and technical activities	5.4	2.7	(1.1)
N	Administrative and support service activities	4.3	7.2	5.9
O	Public administration and defence; compulsory social security	7.5	:	:
P	Education	7.6	2.1	:
Q	Human health and social work activities	11.5	7.1	4.7
R	Arts, entertainment and recreation	1.7	(1.1)	:
S	Other service activities	2.6	1.7	3.0
T	Activities of households as employers	1.4	2.5	17.5
U	Activities of extraterritorial organisations and bodies	0.1	:	:

Source: Eurostat, EU LFS (annual averages).

Note: Recent EU movers defined as working-age foreign nationals resident for seven years or less in another Member State. ":" indicate figures too small to be reliable. Figures in brackets of limited reliability. For some activities (e.g. agriculture, construction, accommodation and food service activities) the LFS may understate the number of employed due to underestimation of seasonal workers.

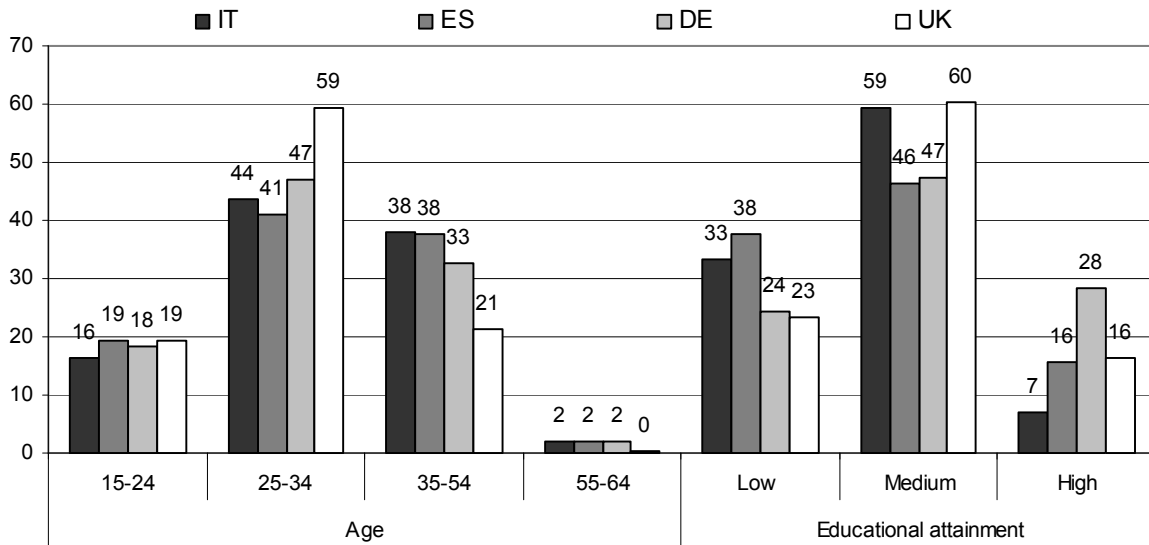
Table A7: Occupation of total resident employment and of employed recently mobile, 2010 (% of total employment by group)

Occupations (ISCO)		Total EU-15 workforce	Recent EU-10 movers	Recent EU-2 movers	
High-skilled	1	Legislators, senior officials and managers	9.0	4.8	1.5
	2	Professionals	14.8	6.6	2.5
	3	Technicians and associate professionals	17.6	5.2	3.3
Intermediate	4	Clerks	11.7	4.7	2.5
	5	Service workers and shop and market sales workers	14.6	16.9	15.9
	6	Skilled agricultural and fishery workers	2.5	1.1	2.5
	7	Craft and related trades workers	12.4	15.6	24.0
	8	Plant and machine operators and assemblers	7.3	14.5	7.5
Low-skilled	9	Elementary occupations	10.0	30.5	40.4

Source: Eurostat, EU LFS (annual averages).

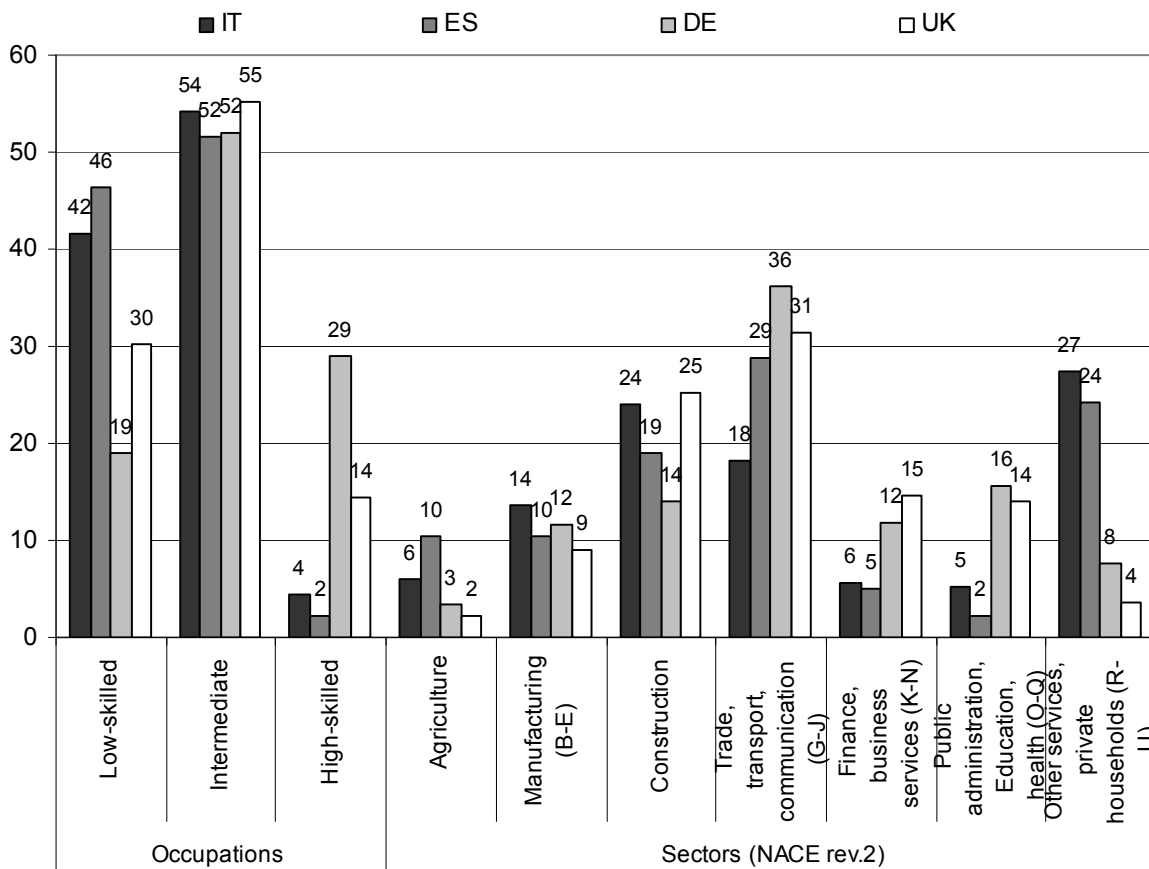
Note: Recent EU movers defined as working-age foreign nationals resident for seven years or less in another Member State. ":" indicate figures too small to be reliable. Figures in brackets of limited reliability. For some occupations (e.g. agriculture, construction, accommodation and food service activities) the LFS may understate the number of employed due to underestimation of seasonal workers. The grouping of ISCO categories into 'high-skilled', 'intermediate' and 'low-skilled' follows an OECD methodology presented in OECD, *International migration outlook*, SOPEMI, 2007 pp. 155-156.

Chart A9: Age and educational attainment of recent EU-2 movers, by main destination countries (2010)



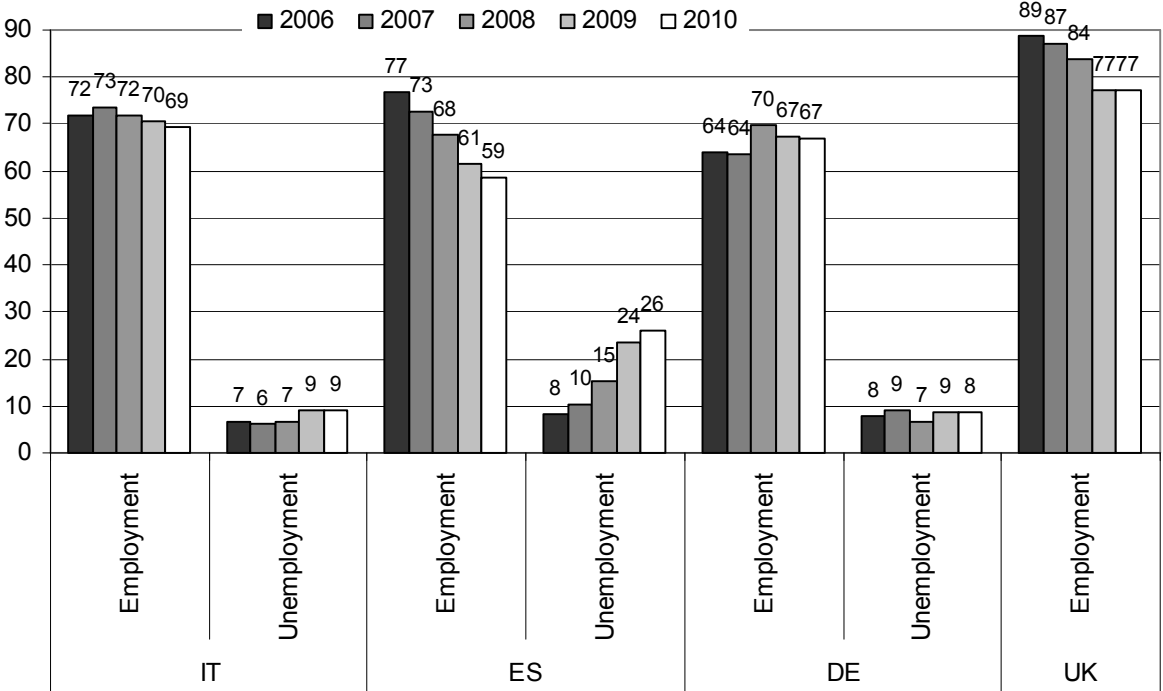
Source: Eurostat, EU LFS (annual averages). Note: EU-2 movers defined as economically active working-age EU-2 nationals resident for seven years or less in the destination country.

Chart A10: Occupational and sectoral distribution of recent EU-2 movers in employment, by main destination countries (2010)



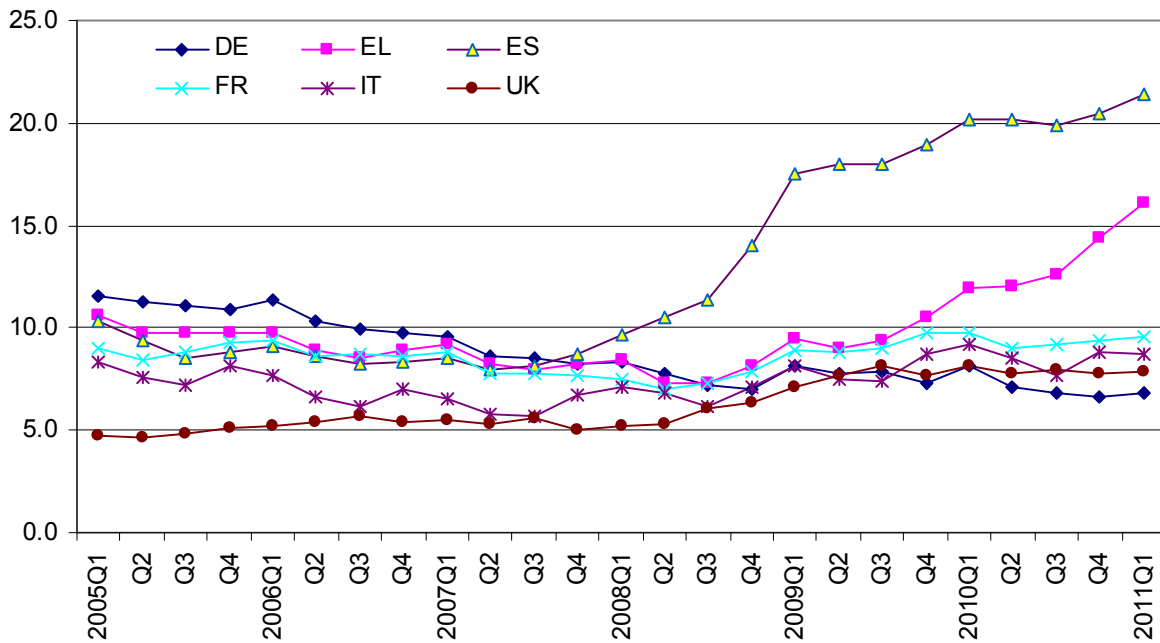
Source: Eurostat, EU LFS (annual averages). Note: EU-2 movers defined as working-age EU-2 nationals in employment resident for seven years or less in the destination country.

Chart A11: Labour market status of EU-2 nationals (aged 15-64), by main destination countries (2006-2010)



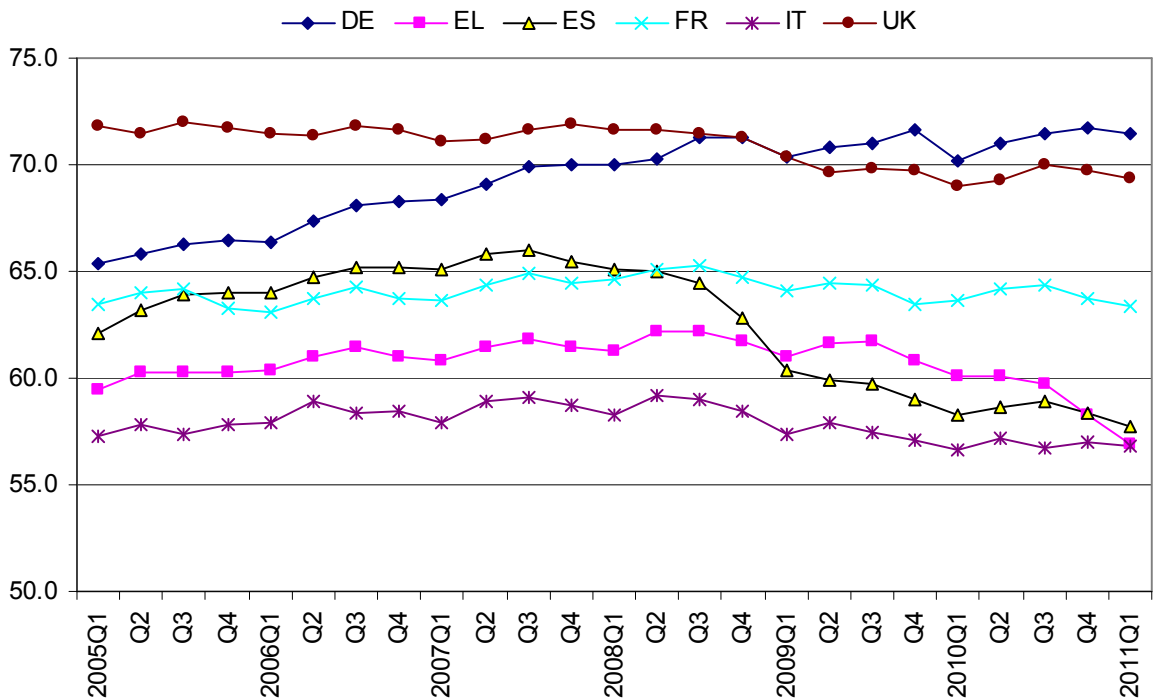
Source: Eurostat, EU LFS (annual averages). Note: EU-2 nationals not restricted to recent arrivals contrary to other graphs presented in the annex. UK: share of unemployed not publishable due to small sample size

Chart A12: Overall unemployment rates in the main EU-15 receiving countries, 2005-2011



Source: Eurostat, EU LFS (quarterly adjusted data).

Chart A13: Overall employment rates in the main EU-15 receiving countries, 2005-2011



Source: Eurostat, EU LFS (quarterly adjusted data)

2. References

Baas T., H. Brücker, and A. Hauptmann (2009), 'Labor Mobility in the Enlarged EU: Who Wins, Who Loses?', in Kahanec, M. and Zimmermann, K. F. (eds.), *EU labour markets after post-enlargement migration*, Springer, Heidelberg.

Barrett A. and B. Maître (2011), 'Immigrant Welfare Receipt across Europe', *IZA Discussion Paper*, No. 5515

Brücker, H. *et al.* (2009), *Labour mobility within the EU in the context of enlargement and the functioning of the transitional arrangements*, Study commissioned by DG EMPL, European Integration Consortium (IAB, CMR, fRDB, GEP, WIFO, wiiw), Nürnberg;

D'Auria, F., K. Mc Morrow and K. Pichelmann (2008), 'Economic impact of migration flows following the 2004 EU enlargement process: A model based analysis', *European Economy, Economic Papers*, No. 349;

Fellmer, S. and Kolb, H. 2009. EU labour migration: Government and social partner policies in Germany. In: Béla Galgóczi, B., Leschke, J. & Watt, A. (eds.) 2009. EU labour migration since enlargement: Trends, impacts and policies. Farnham: Ashgate.

Holland D., T. Fic, A. Rincon-Aznar, L. Stokes and P. Paluchowski (2011), *Labour mobility within the EU - The impact of enlargement and the functioning of the transitional arrangements*, Study commissioned by DG EMPL, NIESR, London.

Kausar, R (2011), "Bulgarian and Romanian migration to the UK", Presentation at Department for Communities and Local Government, February 2011.

Koehler, J., Laczko, F., Aghazarm, C. and Schad, C. 2010. Migration and the economic crisis in the European Union: Implications for Policy. Research and Publications Division, IOM. Retrieved from <http://www.labourmigration.eu/research/report/12-migration-and-the-economic-crisis-implications-for-policy-in-the-european-union> .